

14A/15A/24A SERIES

8 PIN LEADING & TRAILING
TTL ACTIVE DELAY LINE

FEATURES

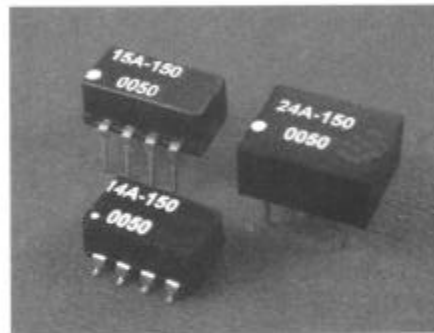
- 8-PIN PACKAGE.
- 5 EQUALLY-SPACED TAPS.
- TTL SCHOTTKY INTERFACED.
- TOTAL DELAYS FROM 25-1000nS.

ELECTRICAL CHARACTERISTICS

I _{IH} LOGIC"1" INPUT CURRENT	:50UA MAX
I _{IL} LOGIC"0" INPUT CURRENT	:-2mA MAX
V _{OH} LOGIC"1" OUTPUT VOLTAGE	:2.7V MIN
V _{OL} LOGIC"0" OUTPUT VOLTAGE	:0.5V MAX
V _{IH} LOGIC"1" INPUT VOLTAGE	:2.0V MIN
V _{IL} LOGIC"0" INPUT VOLTAGE	:0.8V MAX
T _A OPERATING TEMPERATURE	:0°C TO 70°C
N _H FANOUT"1" OUTPUT	:20 TTL LOAD
N _L FANOUT"0" OUTPUT	:10 TTL LOAD
SUPPLY CURRENT	:75mA TYP.

ELECTRICAL SPECIFICATIONS

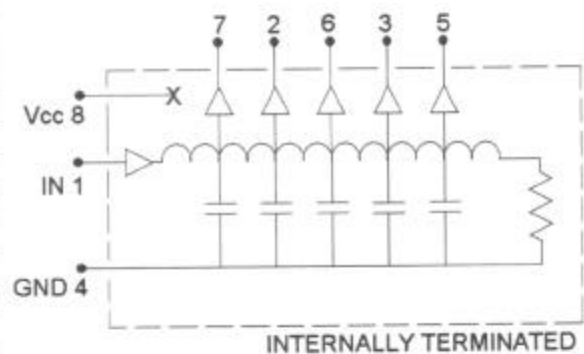
PART NO.	DELAY TIME T _d (nS)	TAP DELAY (nS)	RISE TIME T _r (nS)max
15A/14A/24A-025	25 ±2	5 ±2	4
15A/14A/24A-050	50 ±5%	10 ±2	4
15A/14A/24A-075	75 ±5%	15 ±2	4
15A/14A/24A-100	100 ±5%	20 ±2	4
15A/14A/24A-150	150 ±5%	30 ±2	4
15A/14A/24A-200	200 ±5%	40 ±2	4
15A/14A/24A-250	250 ±5%	50 ±5%	4
15A/14A/24A-300	300 ±5%	60 ±5%	4
15A/14A/24A-500	500 ±5%	100 ±5%	4
15A/14A/24A-1000	1000 ±5%	200 ±5%	4



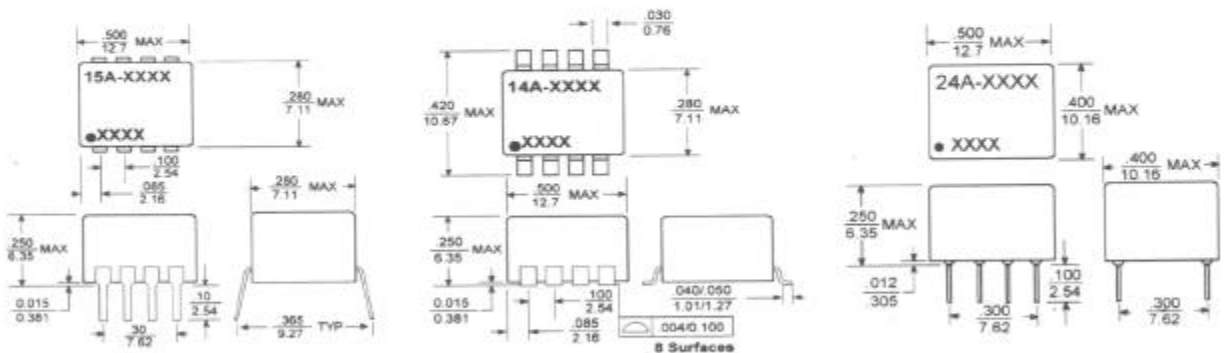
INPUT PULSE TEST CONDITION

PULSE VOLTAGE	:3.2V
PULSE WIDTH	:50NS MIN. OR 100%TD
DUTY CYCLE	:-<50%
PULSE RISE TIME	:2NS(0.75 TO 2.4V)
TIME DELAY MEASURED	:@1.5V IECEL
SUPPLY VOLTAGE VCC	:5.0 ±0.25VDC

PIN CONNECTIONS



MARKINGS AND DIMENSIONS



Dimensions: inches/mm Unless otherwise specified, all tolerances are ±.010/±0.25

ALLEN AVIONICS, INC.

255 East Second Street, Mineola, NY 11501 • Tel: (516) 248-8080 • Fax: (516) 747-6724 • www.allenavionics.com