

40A/41A/49A/50A SERIES

14 PIN DUAL-IN-LINE
TTL ACTIVE DELAY LINE

FEATURES

- 14-PIN PACKAGE.
- 5EQUALLY-SPACED TAPS.
- TTL SCHOTTKY INTERFACED.
- TOTAL DELAYS FROM 25-1000nS.

ELECTRICAL CHARACTERISTICS

I _{IH} Logic "1" Input Current	:50uA max
I _{IL} Logic "0" Input Current	:-2mA max
V _{OH} Logic "1" Output Voltage	:2.7V min
V _{OL} Logic "0" Output Voltage	:0.5V max
V _{IH} Logic "1" Input Voltage	:2.0V min
V _{IL} Logic "0" Input Voltage	:0.8V max
T _A Operating Temperature	:0°C to 70°C
N _H Fanout "1" Output	:20 TTL Load
N _L Fanout "0" Output	:10 TTL Load
Supply Current	:75mA Typ.

ELECTRICAL SPECIFICATIONS

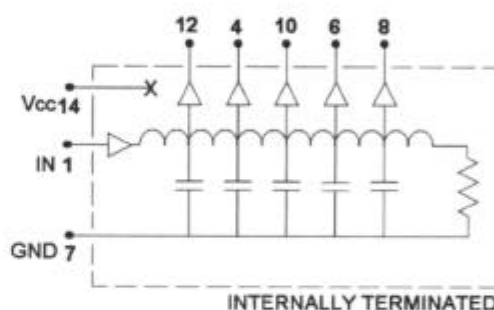
PART NO.	DELAY TIME T _d (nS)	TAP DELAY (nS)	RISE TIME T _r (nS)max
40A/41A/49A/50A-025	25 ± 2	5 ± 2	4
40A/41A/49A/50A-050	50 ± 5%	10 ± 2	4
40A/41A/49A/50A-075	75 ± 5%	15 ± 2	4
40A/41A/49A/50A-100	100 ± 5%	20 ± 2	4
40A/41A/49A/50A-125	125 ± 5%	25 ± 2	4
40A/41A/49A/50A-150	150 ± 5%	30 ± 2	4
40A/41A/49A/50A-200	200 ± 5%	40 ± 2	4
40A/41A/49A/50A-250	250 ± 5%	50 ± 5%	4
40A/41A/49A/50A-500	500 ± 5%	100 ± 5%	4
40A/41A/49A/50A-1000	1000 ± 5%	200 ± 5%	4



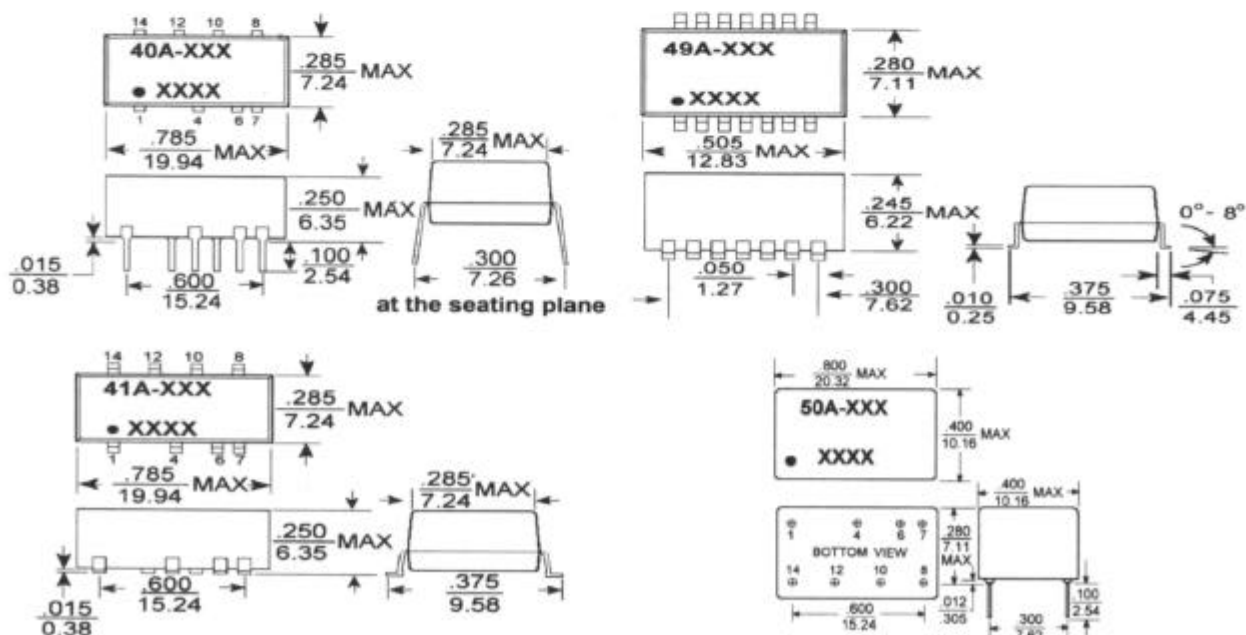
INPUT PULSE TEST CONDITION

Pulse Voltage	:3.2V
Pulse Width	:50nS min. or 100%T _d
Duty Cycle	:<50%
Pulse Rise Time	:2nS(0.75 to 2.4V)
Time Delay Measured	@1.5V level
Supply Voltage V _{cc}	:5.0 ± 0.25Vdc

PIN CONNECTIONS



MARKINGS AND DIMENSIONS



Dimensions: inches/mm Unless otherwise specified, all tolerances are ±.010/±0.25

ALLEN AVIONICS, INC.