

51A SERIES

16 PIN DUAL-IN-LINE
TTL ACTIVE DELAY LINE

FEATURES

- 16-PIN PACKAGE.
- 5EQUALLY-SPACED TAPS.
- TTL SCHOTTKY INTERFACED.
- TOTAL DELAYS FROM 25-1000nS.

ELECTRICAL CHARACTERISTICS

| | |
|--|--------------|
| I _H Logic "1" Input Current | :50uA max |
| I _L Logic "0" Input Current | :-2mA max |
| V _{OH} Logic "1" Output Voltage | :2.7V min |
| V _{OL} Logic "0" Output Voltage | :0.5V max |
| V _{IH} Logic "1" Input Voltage | :2.0V min |
| V _{IL} Logic "0" Input Voltage | :0.8V max |
| T _A Operating Temperature | :0°C to 70°C |
| N _H Fanout "1" Output | :20 TTL Load |
| N _L Fanout "0" Output | :10 TTL Load |
| Supply Current | :75mA Typ. |



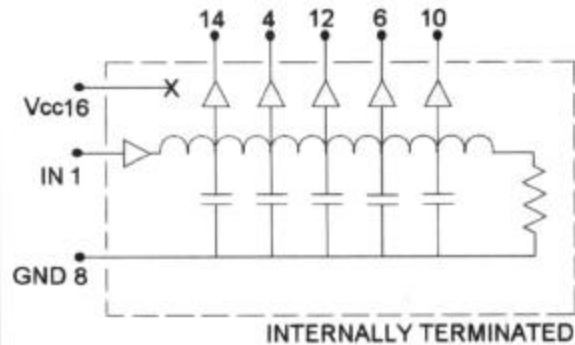
INPUT PULSE TEST CONDITION

| | |
|--------------------------------|----------------------------------|
| Pulse Voltage | :3.2V |
| Pulse Width | :50nS min. or 100%T _d |
| Duty Cycle | :<50% |
| Pulse Rise Time | :2nS(0.75 to 2.4V) |
| Time Delay Measured | :@1.5V level |
| Supply Voltage V _{cc} | :5.0 ± 0.25Vdc |

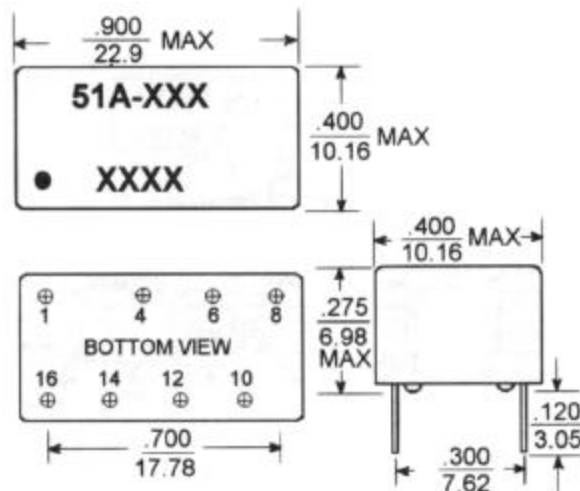
ELECTRICAL SPECIFICATIONS

| PART NO. | DELAY TIME T _d (nS) | TAP DELAY (nS) | RISE TIME Tr(nS)max |
|----------|-----------------------------------|-------------------|------------------------|
| 51A-025 | 25 ± 2 | 5 ± 2 | 4 |
| 51A-050 | 50 ± 5% | 10 ± 2 | 4 |
| 51A-075 | 75 ± 5% | 15 ± 2 | 4 |
| 51A-100 | 100 ± 5% | 20 ± 2 | 4 |
| 51A-150 | 150 ± 5% | 30 ± 2 | 4 |
| 51A-200 | 200 ± 5% | 40 ± 2 | 4 |
| 51A-250 | 250 ± 5% | 50 ± 5% | 4 |
| 51A-300 | 300 ± 5% | 60 ± 5% | 4 |
| 51A-500 | 500 ± 5% | 100 ± 5% | 4 |
| 51A-1000 | 1000 ± 5% | 200 ± 5% | 4 |

PIN CONNECTIONS



MARKINGS AND DIMENSIONS



Dimensions: inches/mm
Unless otherwise specified,
all tolerances are ±.010/±0.25

ALLEN AVIONICS, INC.